



## H Series 1000 Ice Cube Machine

Model: ☐ HDT1000A-251T



H1000 Ice Machine on H530 Bin

- Up to 436kgs (961lbs) daily ice production and only 30.00" (76.00 cm) wide
- R-410A CFC-free refrigerant
- Easy access front facing evaporator
- All plastic interior, no exposed tubes or wires, smooth rounded corners for fast easy wipe downs
- The food zone is sealed from above and on the back of the door panel with commercial grade rubber gaskets
- Water shield, distribution tube, pump, floats, and trough removable by hand (no tools required). Fast and easy
- Top air discharge, transfers air discharge from the sides of the machine to the top by having the louvered panel on the top of the machine rather than the sides. Re-directs the hot air from the ice machine toward the ceiling rather than directly into the working kitchen environment

### Specifications

**BTU Per Hour:**  
16,250 (average), 18,600 (peak)

**Compressor:**  
Nominal Rating: 3/4HP

**Refrigerant:**  
R-410A

Ice Machine Electric  
220-240/50/1 standard

### Total Circuit Ampacity:

Air Cooled: 13.8A

**Power Consumption:**Air  
Cooled: 1980W

**Maximum Fuse Size:** 20A

HACR-type circuit breakers can be used in place of fuses

### Operating Limits:

- Ambient Temperature Range: 1.7°C to 43.3°C
- Water Temperature Range: 1.7°C to 32.2°C
- Water Pressure Ice Maker Water In:  
Min. 20 psi (137.9kPa)  
Max. 80 psi (551.1kPa)



### Cube Size Available



**Dice**  
7/8" X 7/8" X 7/8"  
2.22 X 2.22 X 2.22 (cm)

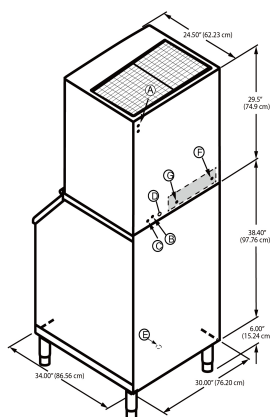


H Series 1000 Ice Cube Machine



## H Series 1000 Ice Cube Machine

### H1000 on H530 Storage Bin



- (A) Electrical Entrance (2) Options
- (B) 3/8" (0.95 cm) F.P.T. Ice Making Water Inlet
- (C) 1/2" (1.27 cm) F.P.T. Ice Making Water Drain
- (D) 1/2" (1.27 cm) Auxillary Base Drain Socket
- (E) 3/4" (1.91 cm) Bin Drain
- (F) 3/8" (0.95 cm) F.P.T. Water Condenser Inlet (water-cooled units)
- (G) 1/2" (1.27 cm) F.P.T. Water Condenser Outlet (water-cooled units)

**Installation Note - Minimum installation clearance:**  
Sides: 0, Top: 12" (30.5 cm), back: 5" (12.7 cm).

### Space-Saving Designs



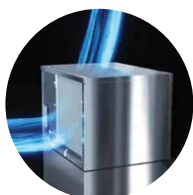
|             | H1000<br>H530      |
|-------------|--------------------|
| Height      | 74"<br>188cm       |
| Width       | 30.00"<br>76.20 cm |
| Depth       | 34.00"<br>86.50 cm |
| Bin Storage | 463 lbs<br>210 kg  |

Height includes adjustable bin legs 6.00" to 7.00" (15.24 cm to 17.78 cm) set at 6.00" (15.24 cm).

| Model         | Ice Shape | Ice Production 24 Hours |                      | Power Usage<br>kWh/100 lbs.<br>@90°F/70°F | Water Usage<br>100 lbs.<br>45.4 kgs. of Ice |
|---------------|-----------|-------------------------|----------------------|---|---|
|               |           | 70°F Air/ 50°F Water    | 90°F Air/ 70°F Water |   |   |
| HDT1000A-251T |           | 436 kg                  | 357kg                | 6.18                                      | 71.8  |
|               |           | 961 lbs                 | 787lbs               |   |   |

Order ice storage bin separately. Suffix of model "A" means air cooled condenser

### Top Air Discharger



Top air discharge, transfers air discharge from the sides of the machine to the top by having the louvered panel on the top of the machine rather than the sides. Re-directs the hot air from the ice machine toward the ceiling rather than directly into the working kitchen environment

### Easy Access to Parts of Water System



Water shield, distribution tube, pump, floats, and trough removable by hand

### Easy Access to Air Filter



Easy to clean, reusable air filter protects condenser from lint, grease and dust.